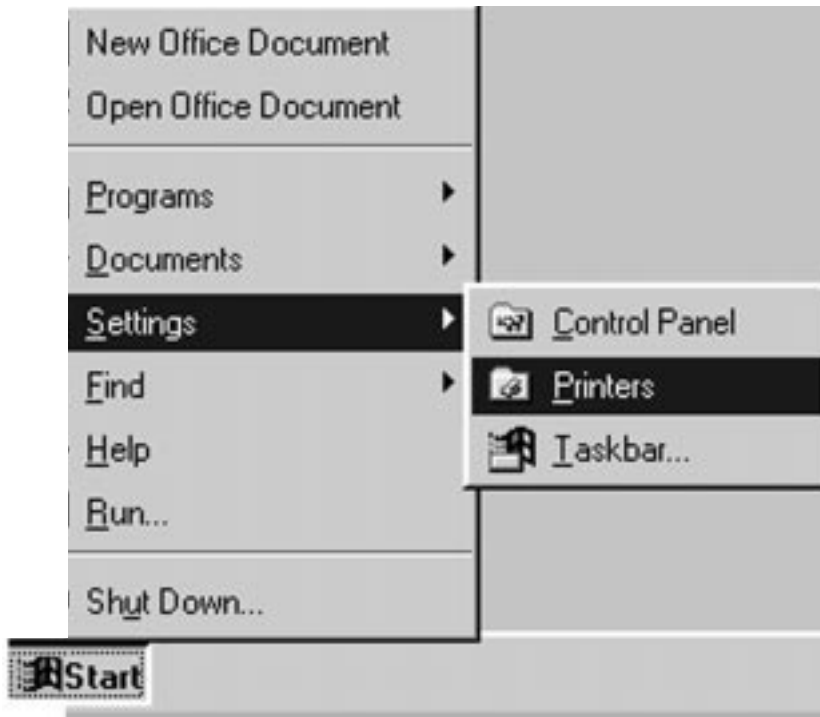


Malloy

LITHOGRAPHING, INC.

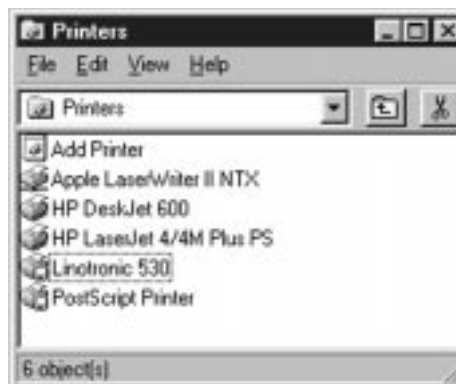
5411 Jackson Road
Ann Arbor, MI 48103
(800) 722-3231

Configuring a Printer Driver Before Writing PostScript in Win '95



You must first configure the preferences of the printer driver before writing PostScript from the application

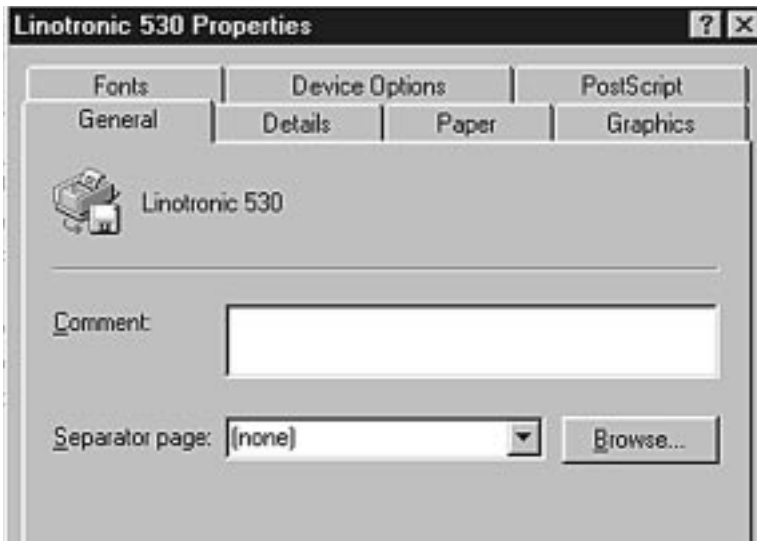
►go to the START button on desktop→
→ settings→ printers



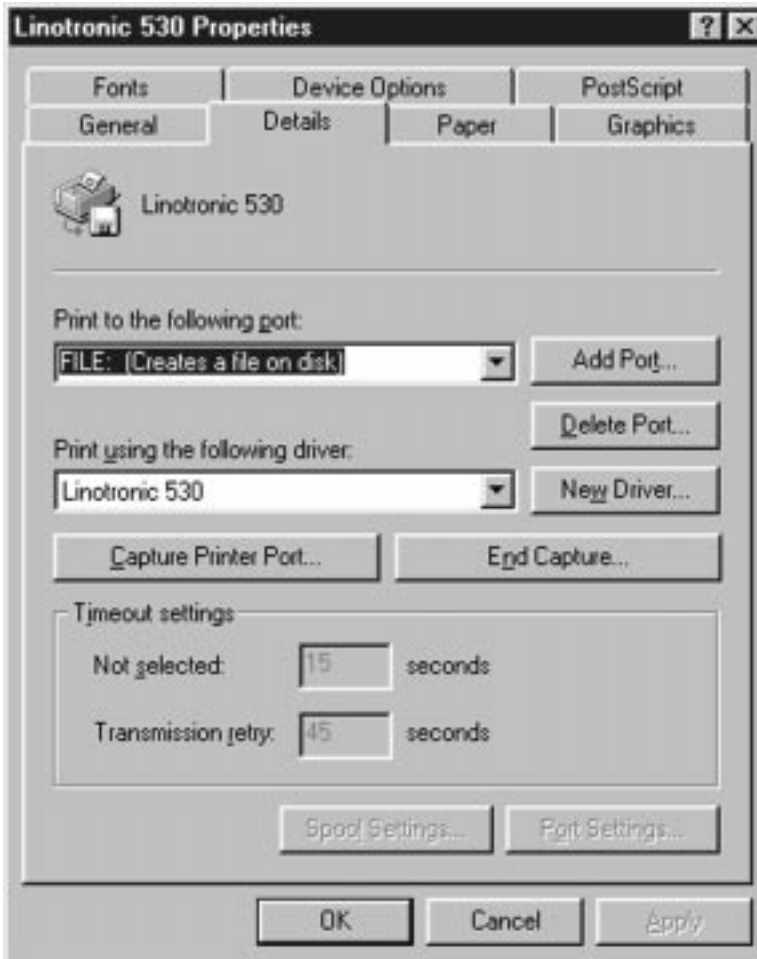
Select *Linotronic 530*



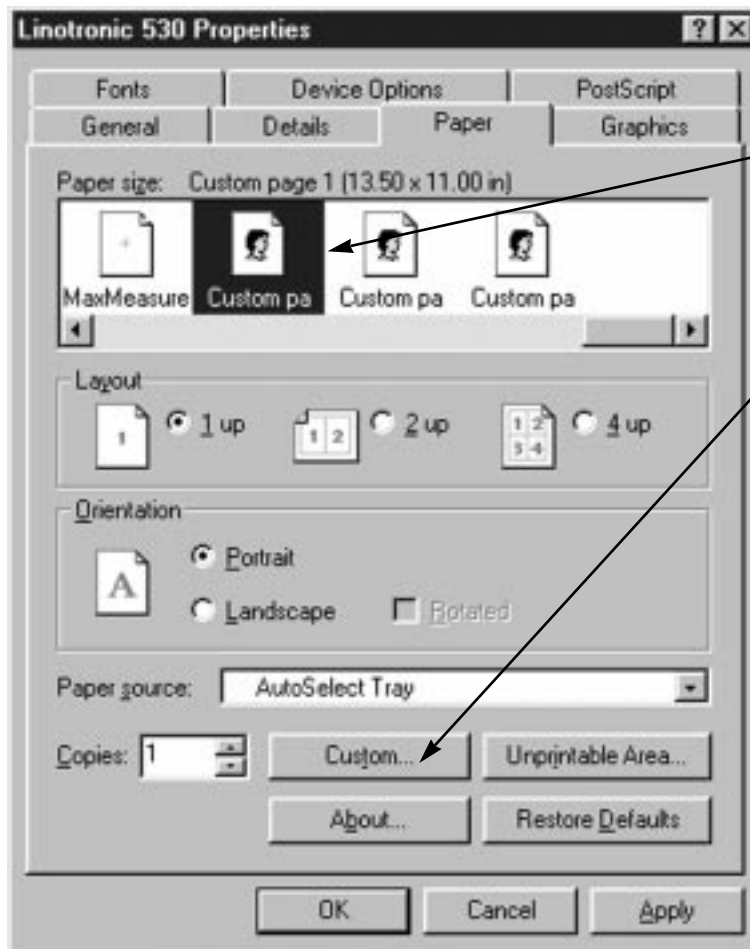
Select *File*→ *Properties*:



Select **General** from the properties window
▶separator page: "none"



Select **Details** from the properties window
▶print to the following port: "file: [Creates a file on disk]"
▶print using the following driver: "Linotronic 530"



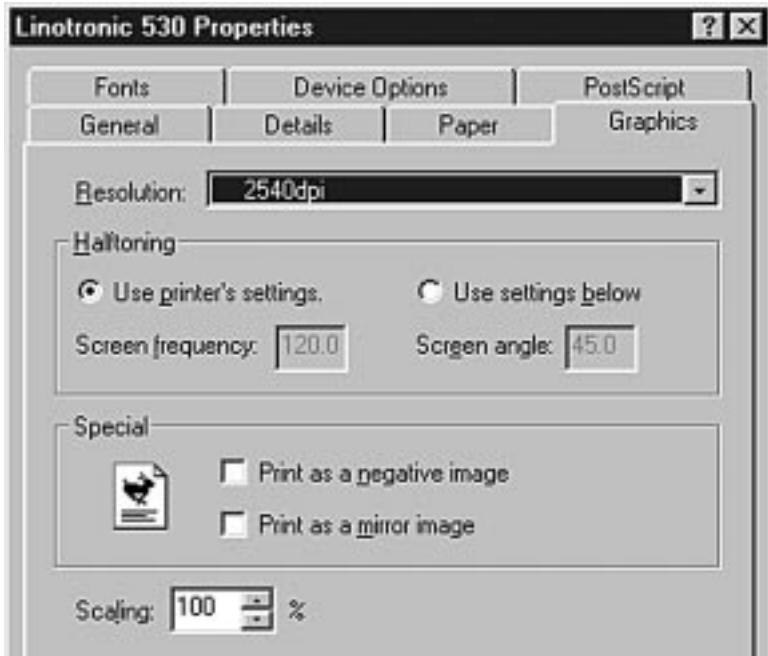
Select Paper from the properties window

- ▶ paper size: scroll over to select "Custom page" icon
- ▶ layout: "1-up"
- ▶ orientation: "Portrait"
- ▶ select the "Custom..." button

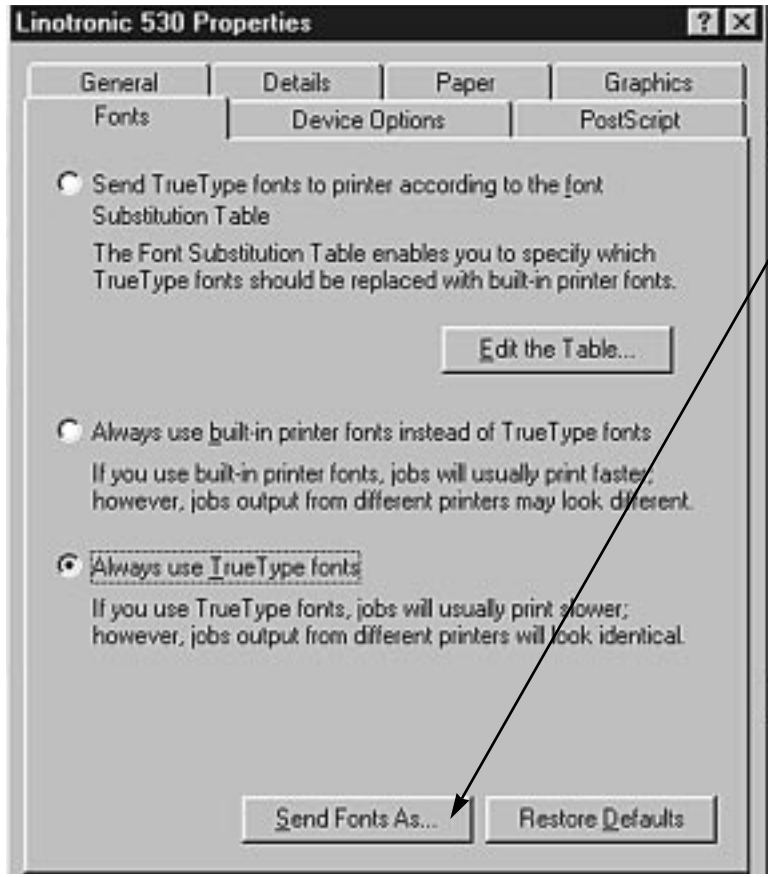


Name your custom page

- ▶ width and length: "1" over the dimensions of the document size you will be writing PostScript on (this allows for bleeds and registration marks)
- ▶ click "OK"



- ▶ Select **Graphics** from the properties window
- ▶ resolution: "2540dpi"
- ▶ halftoning: "Use printers settings"
- ▶ scaling: "100%"



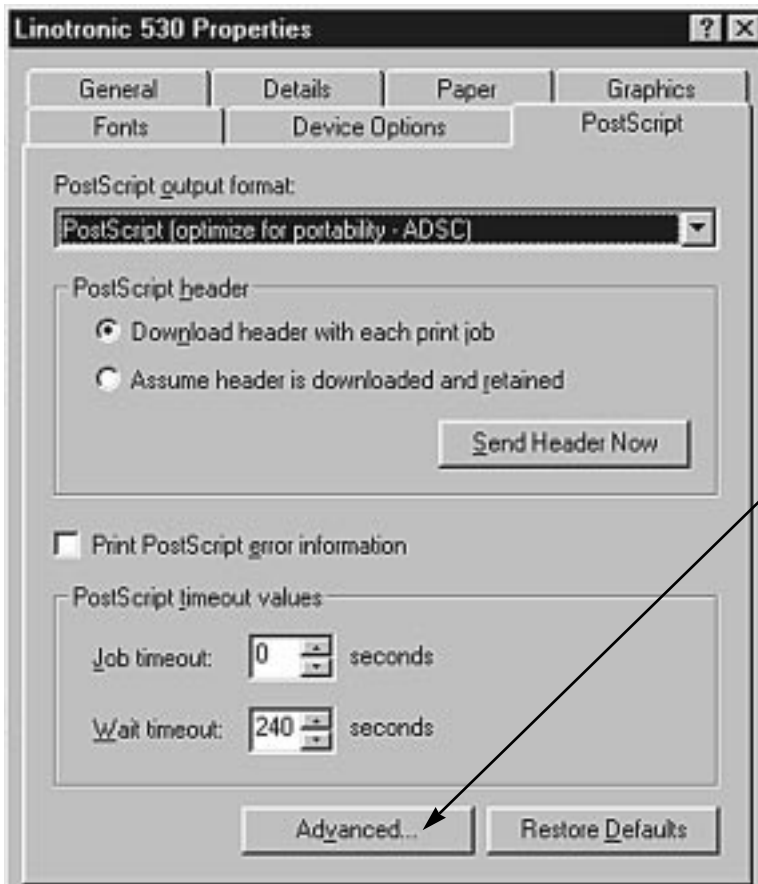
- ▶ Select **Fonts** from the properties window
- ▶ select: "Always use TrueType fonts"
- ▶ select the button "Send Fonts As..."



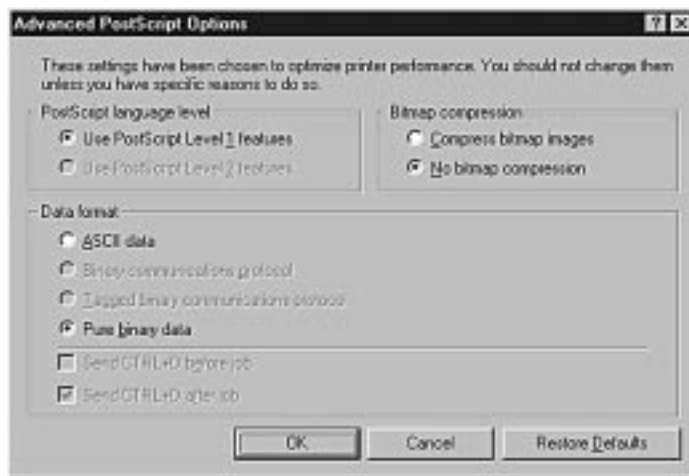
- ▶ TrueType fonts: send TrueType fonts as "Outlines"
- ▶ threshold to switch...: "100"
- ▶ favor system TrueType over printer fonts: "unchecked"
- ▶ send PostScript fonts as: "In Native Format"
- ▶ click "OK"



- Select *Device Options* from the properties window**
- ▶ printer features: "Negative False"
 - ▶ change setting for: negative: "False"



- ▶ Select *PostScript* from the properties window
- ▶ PostScript output format: "PostScript [optimize for portability-ADSC]"
- ▶ PostScript header: "Download header with each print job"
- ▶ print PostScript error information: unchecked
- ▶ select the "Advanced..." button



- ▶ PostScript language level-select: "Use PostScript level 1 features"
- ▶ data format: "Pure binary data"
- ▶ click "OK"



- ▶ Select the APPLY button
- ▶ click "OK"

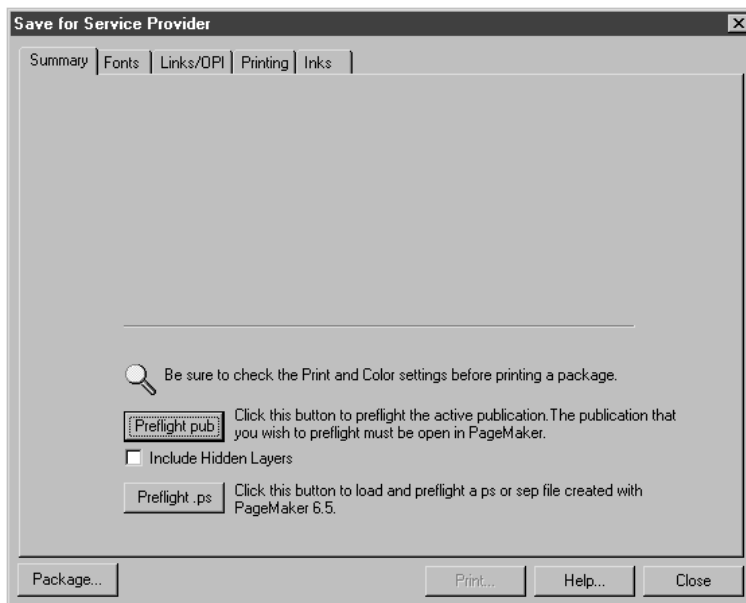
Malloy

LITHOGRAPHING, INC.
SERVICE IN QUALITY BOOK MANUFACTURING

5411 Jackson Road
Ann Arbor, MI 48103
(734) 665-6113

Writing PostScript in PageMaker 6.5 for Win '95 (for one color jobs)

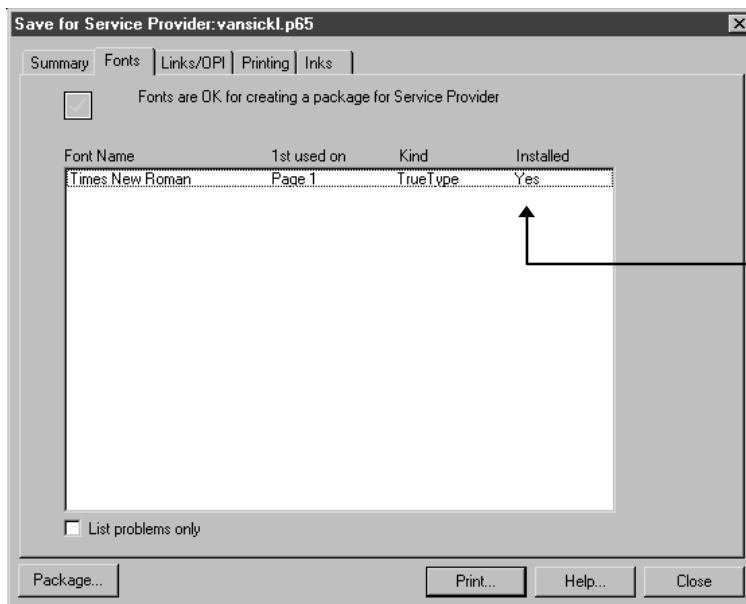
see Configuring a printer Driver Before Writing Postscript



Open the file

Check *font links* under utilities → PageMaker Plug-ins → Save for service provider:

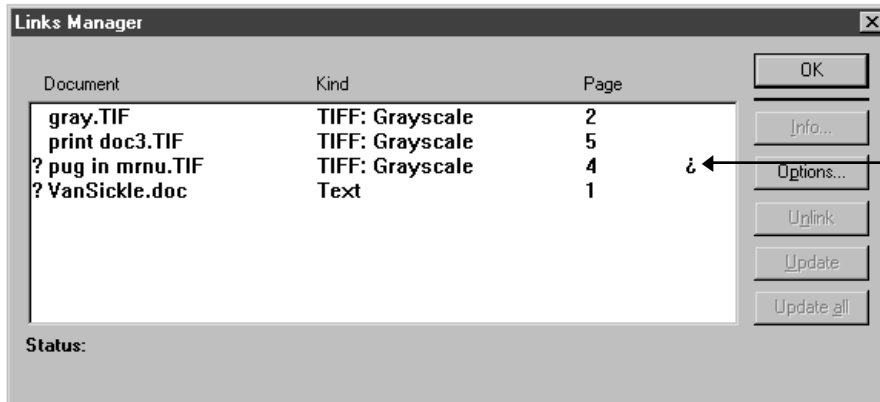
▶ click "Preflight pub", this will scan your document to see if all fonts used in the document are on your system



▶ fonts used in the document will need to be on your system in order to embed the printer fonts into the PostScript file

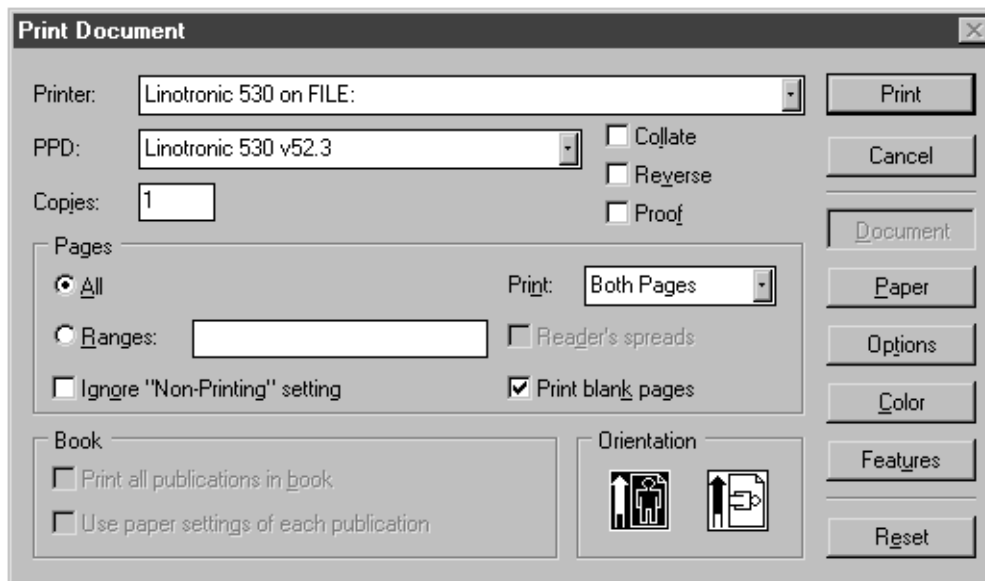
▶ if any fonts being called for in the document are missing a "no" will be displayed here

▶ click "close"



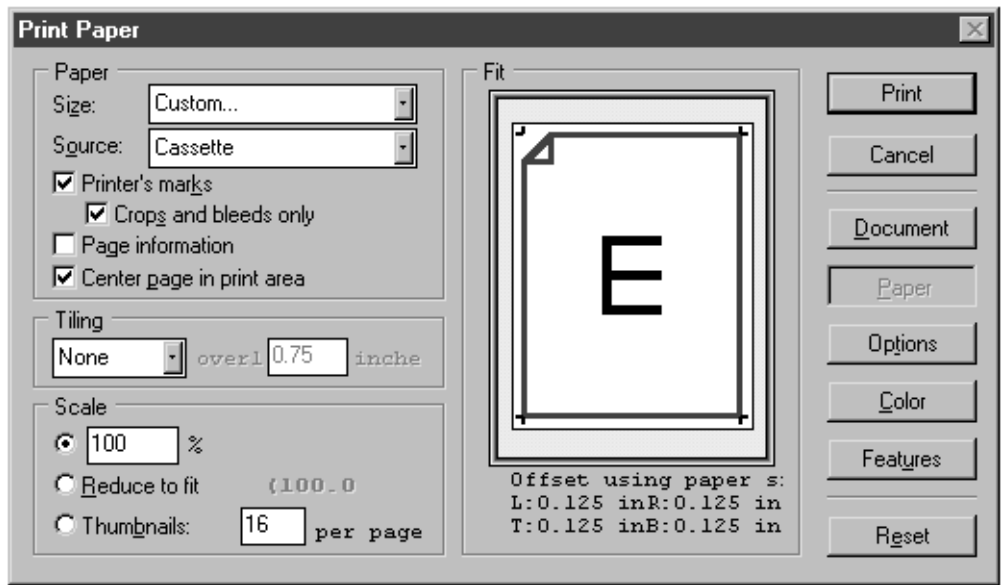
Select **links** under file menu:

- ▶any graphic file used must be linked or embedded
- ▶graphics that are not embedded nor linked will be indicated with an upside down question mark on the right side of the "page" column (when graphics are embedded rather than linked they will be indicated with a question mark on the left side of the "document" column only)



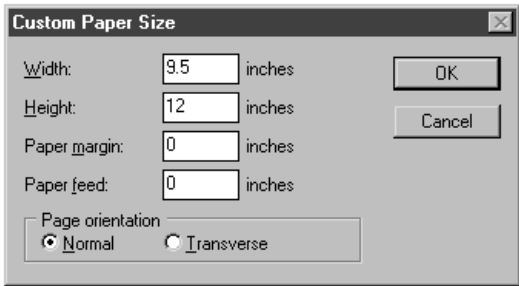
Select **print**

- under file menu:
- ▶select Printer: "Linotronic 530 on File"
- ▶select PPD: "Linotronic 530" printer driver
- Pages
- ▶check: All (note: if the whole file isn't being used then check: "Ranges": _to_)
- ▶Print: "Both Pages"
- ▶check: "Print blank pages"
- ▶Orientation at tall

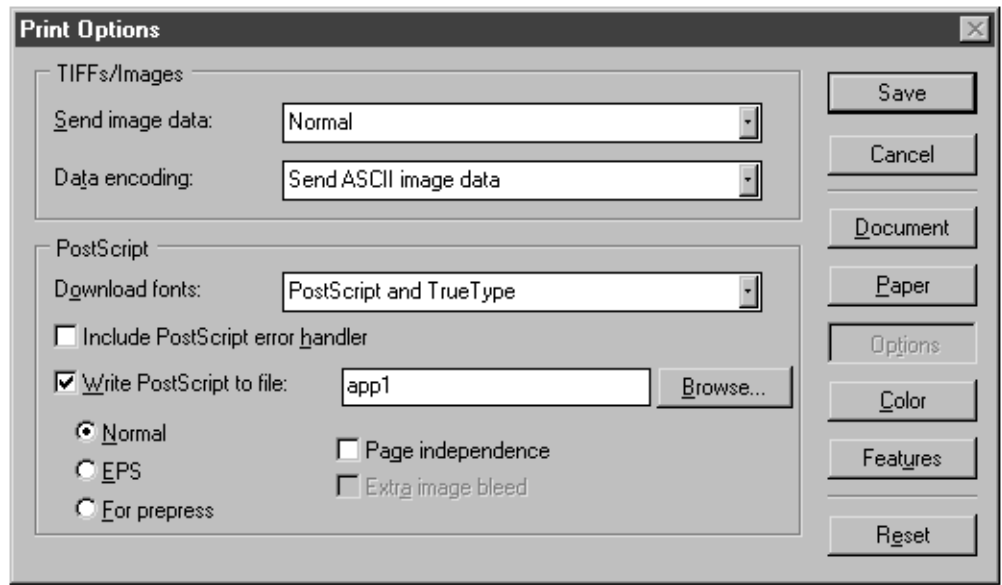


Select Paper:

- Paper
- ▶Size: "Custom" *
- ▶check: "Printer's marks"
- ▶check: "Center page in print area"
- Scale
- ▶check : "100%"

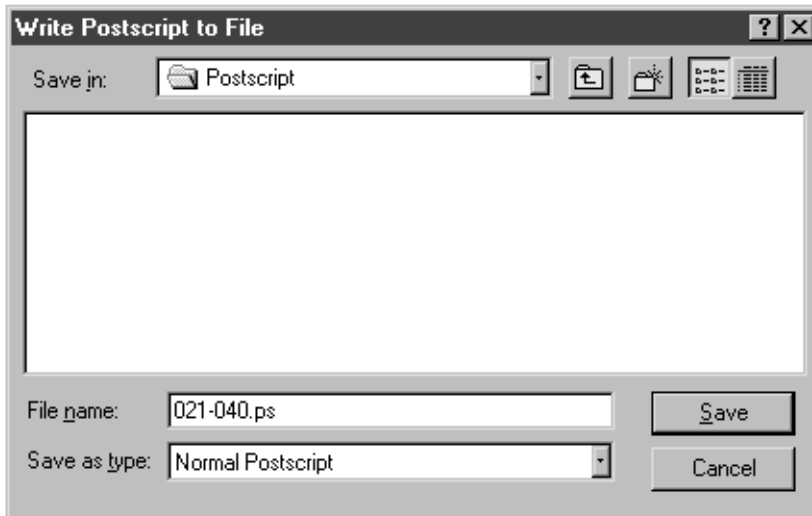


- * ▶set paper width 1 inch over the *document size*, this allows for bleeds and registration marks
- Page orientation
- ▶check: "Normal"
- ▶click "OK"



Select options:

- Tiffs/Images
- ▶Send image data: "Normal"
- ▶Data encoding: "Send ASCII image data"
- PostScript
- ▶Downloadable fonts: "PostScript and TrueType"
- ▶check: "Write PostScript to file"
- ▶check: "Normal"
- ▶click "Browse"

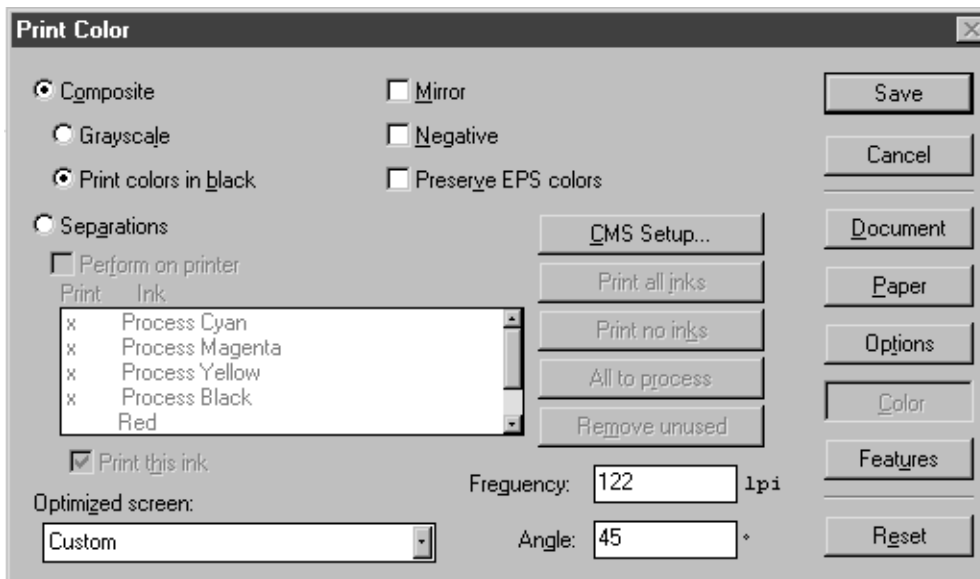


- ▶name your Postscript file using appropriate page numbers followed by ".ps"
- ▶click "Save", to return to the *options* menu

If you have created a single color document then
 ▶click: "Save", to finish writing Postscript

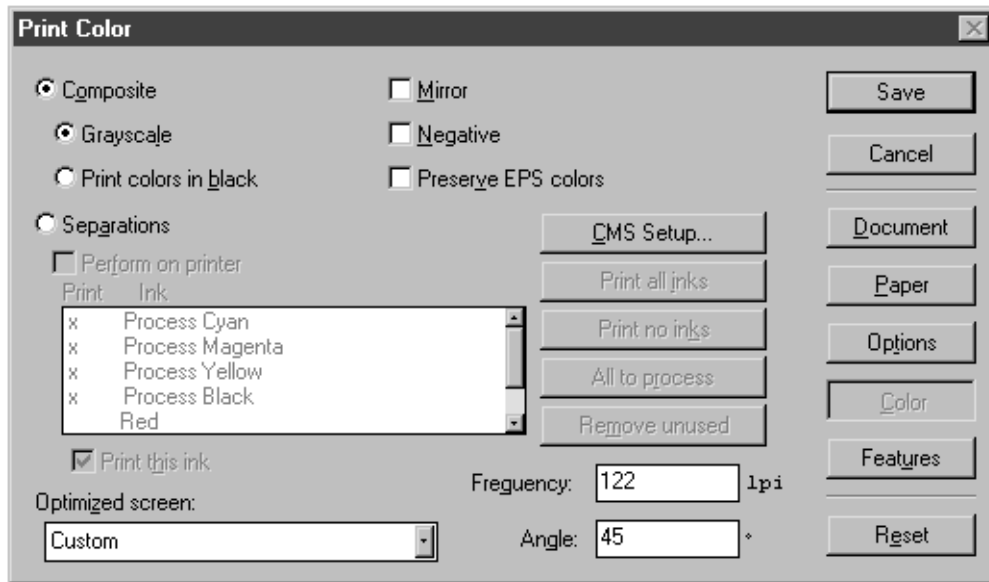
👉 NOTE:

If you have created multiple colors in your document and/or have imported colored graphics, but intend for the document to print one color only, please note the following two options:



color option one
 If you intend for the "color" images to print as solid black, no definition of elements

- select color:**
- ▶Composite: "Print colors in black"
 - ▶Optimized screen: "Custom"
 - ▶Frequency: "122"(lpi)
 - ▶click "Save", to finish writing Postscript
- continued on page 5b*



Color option two

If you intend for the "color" images to print as a screened value of black so that definition between elements is obvious

select Color:

- ▶Composite: "Grayscale"
- ▶Optimized screen: "Custom"
- ▶Frequency: "122"(lpi)
- ▶click "Save", to finish writing Postscript

If you have set your document up using multiple color and intend for the document to print multiple colors, these guidelines are not appropriate for you to use. Please call Brenda Brown (734) 995-8518 in Malloy's Electronic Prepress.

We encourage you to give Brenda a call to discuss these multicolor file issues.