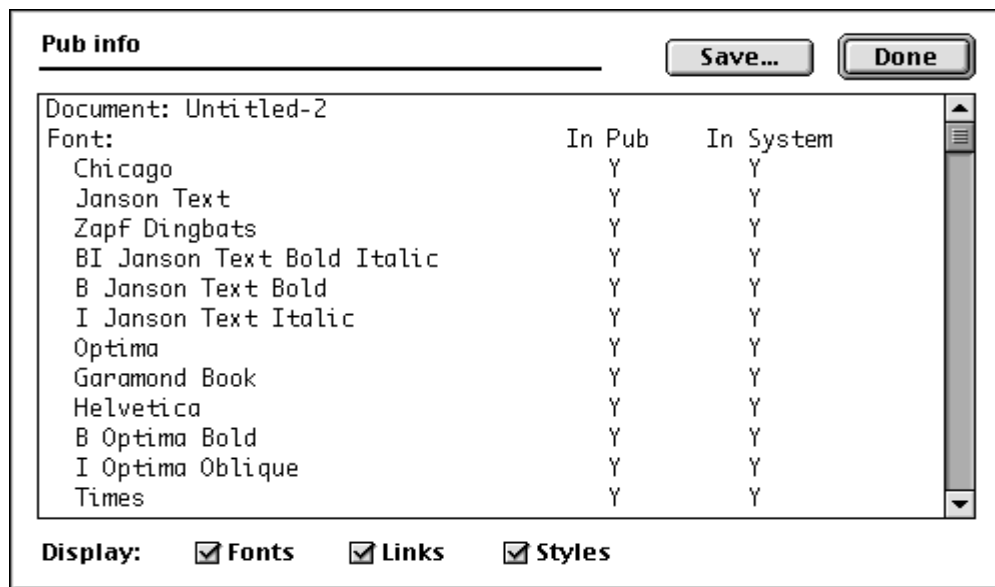


Malloy

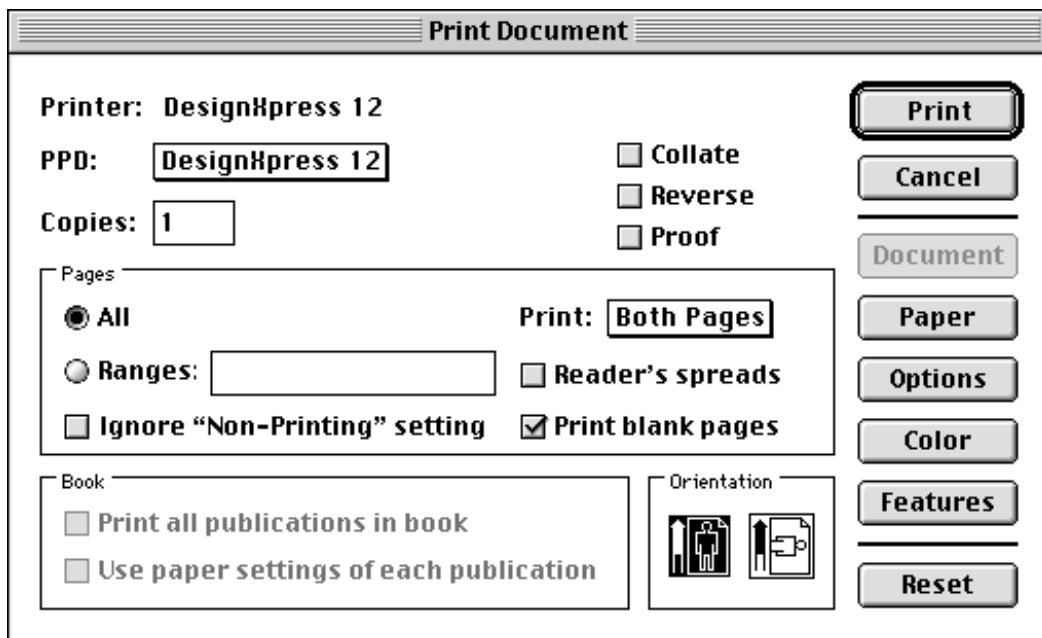
LITHOGRAPHING, INC.
SERVICE IN QUALITY BOOK MANUFACTURING
5411 Jackson Road
Ann Arbor, MI 48103
(734) 665-6113

Writing PostScript in PageMaker 6.5 for the Macintosh (for one color jobs)



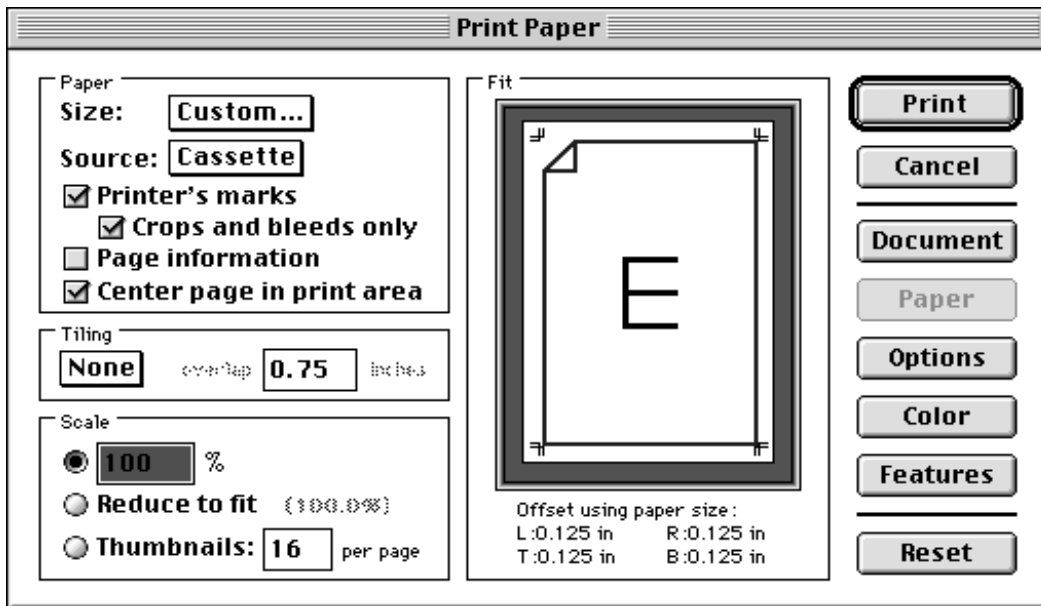
Open the file

- Check **graphics** and **font links** under **utilities** → **PageMaker Plug-ins** → **pub info**:
- ▶to embed the printer fonts into the PostScript file, screen and printer fonts used in the document will need to be on your system
 - ▶any graphic files used must be linked
 - ▶click "Done"



Select **print**

- under **file** menu:
- ▶select PPD: "Linotronic 530" printer driver
 - ▶**Pages**
check: "All" (note: if the whole file isn't being used then check: "Ranges": _to_)
 - ▶Print: "Both Pages"
 - ▶check: "Print blank pages"
 - ▶**Orientation** at tall



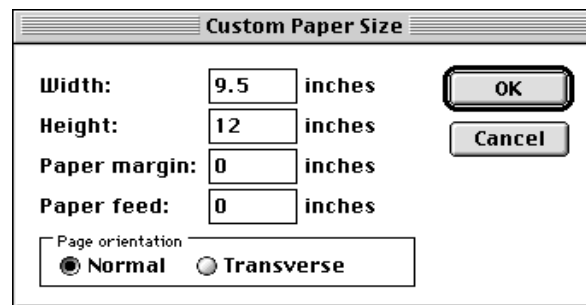
Select *paper*

Paper

- ▶Size: "Custom" *
- ▶check "Printer's marks"
- ▶check "Center page in print area"

Scale

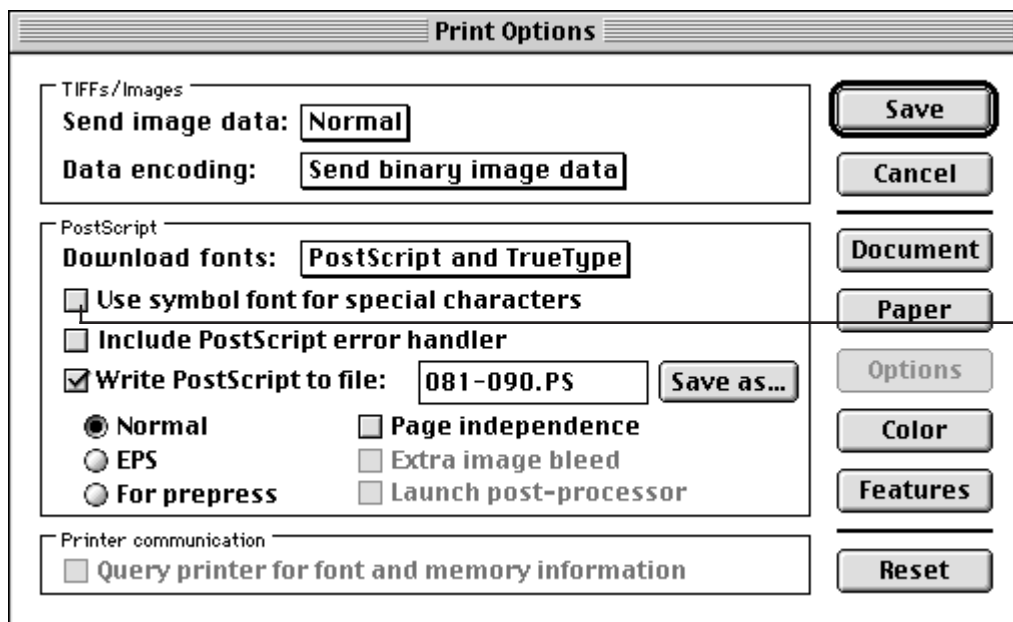
- ▶check : "100%"



- * ▶set paper width 1 inch over document size, this allows for bleeds and registration marks

Page orientation

- check: "Normal"
- ▶click "OK"



Select *options*:

Tiffs/Images

- ▶Send image data: "Normal"
- ▶Data encoding: "Send binary image data"

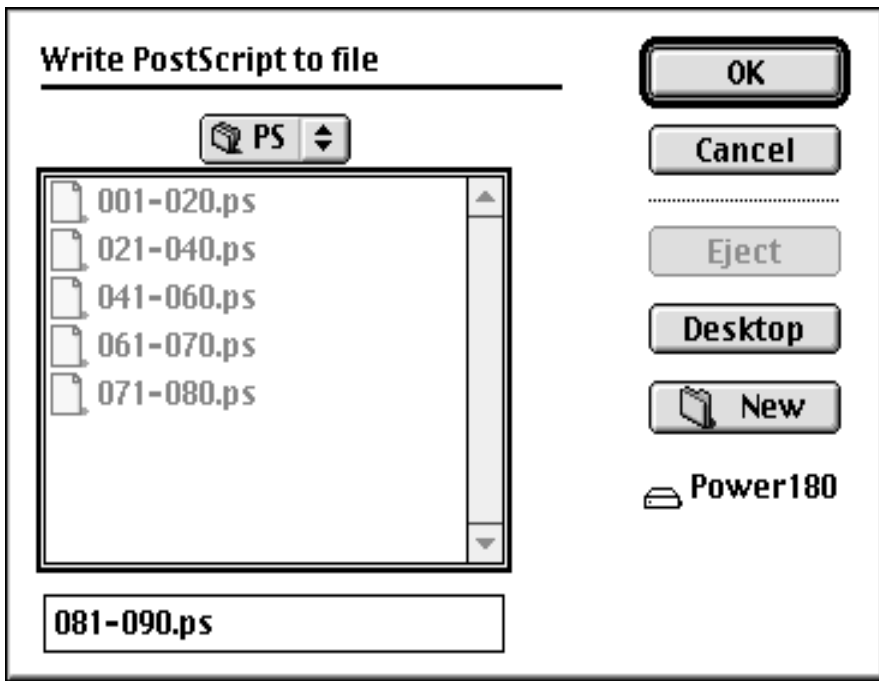
PostScript

- ▶Downloadable fonts: "PostScript and TrueType"

▶ see below

- ▶check: "Write PostScript to file"
- ▶check: "normal"
- ▶click "save as"

▶ Leave this option unchecked if you know that the fonts you used in your publication include the necessary symbols. You should also leave this option unchecked if a symbol font you used uses the same key combination but does not match the symbol in the Symbol font. Otherwise, you may get unexpected substitutions



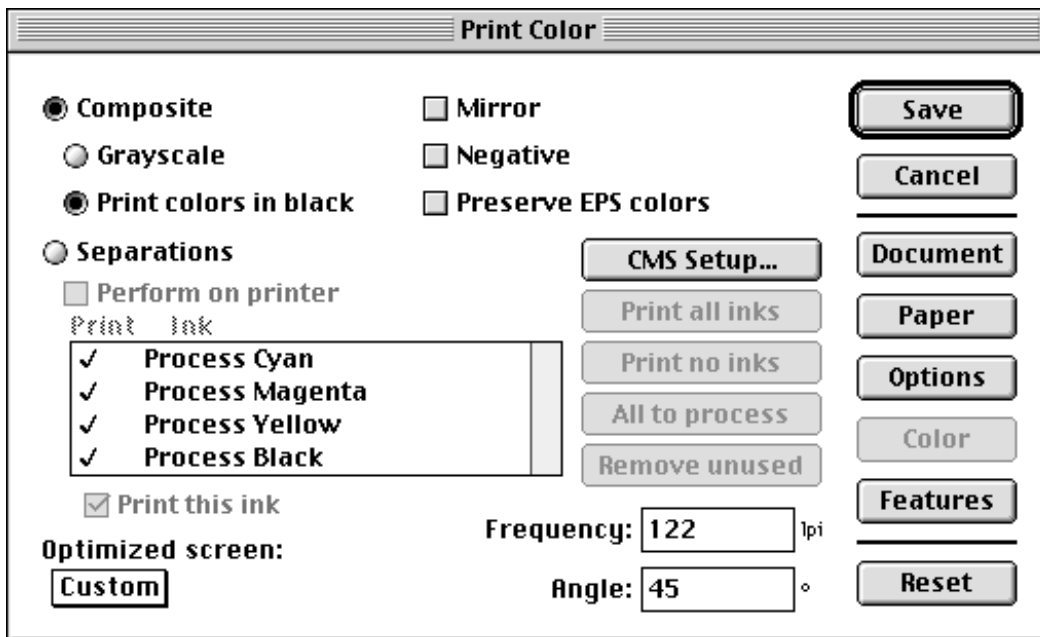
- ▶Name your PostScript file by appropriate page numbers followed by “.ps”
- ▶click “OK”

If you have created a single color document then

- ▶click: “Save”, to finish writing PostScript

NOTE:

If you have created multiple colors in your document and/or have imported colored graphics, but intend for the document to print one color only, please note the following two options:



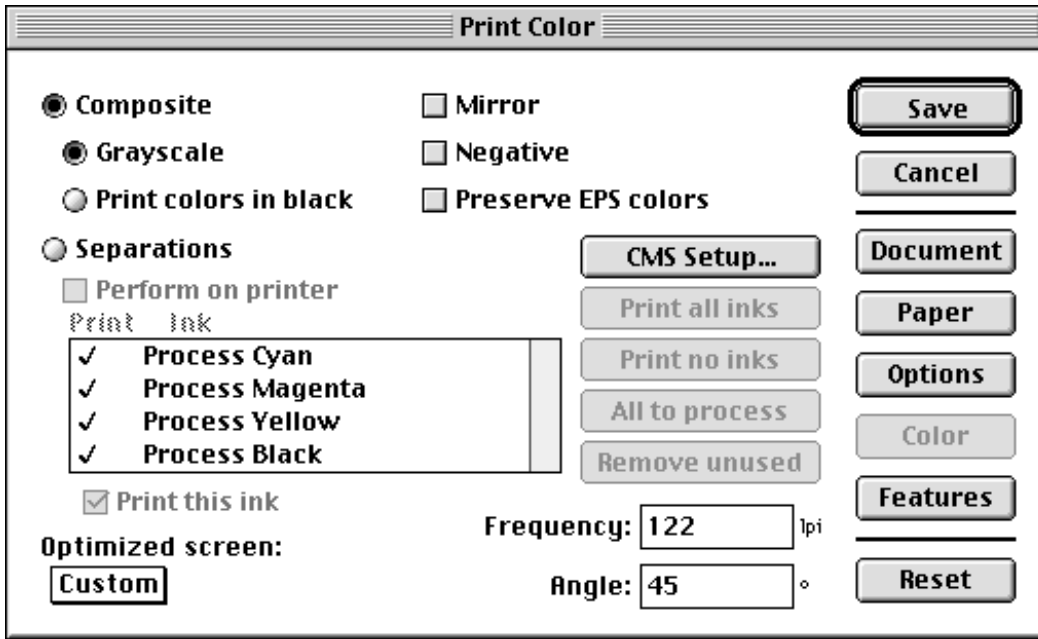
color option one

If you intend for the “color” images to print as solid black, no definition of elements

select color:

- ▶Composite: “Print colors in black”
- ▶Optimized screen: “Custom”
- ▶Frequency: “122”(lpi)
- ▶click “Save”, to finish writing PostScript

continued on page 4



Color option two

If you intend for the "color" images to print as a screened value of black so that definition between elements is obvious

select *Color*:

- ▶Composite: "Grayscale"
- ▶Optimized screen: "Custom"
- ▶Frequency: "122"(lpi)
- ▶click "Save", to finish writing PostScript

If you have set your document up using multiple color and intend for the document to print multiple colors, these guidelines are not appropriate for you to use. Please call Brenda Brown (734) 995-8518 in Malloy's Electronic Prepress.

We encourage you to give Brenda a call to discuss these multicolor file issues.